

Gender Marker

FSL cluster meeting 15th March 2017



Enhance the prevention and mitigation of protection risks, and respond to protection needs through supporting the protective environment in Syria, by promoting international law, IHL, HRL and through quality principled assistance.

HRP-Strategic Objective 2



Whole of Syria - SOUTH TURKEY
FOOD SECURITY AND LIVELIHOODS CLUSTER
Strengthening Humanitarian Response

Gender mainstreaming

- ❖ What is Gender
- ❖ The Gender Marker (GM)
- ❖ How to integrate gender in your proposal



What is Gender

Sex	Gender
Biologically Determined	Socially constructed, context specific - history, culture, tradition, societal norms, religion.
Unchangeable	Learned attributes characteristics assigned to women, girls, boys and men that determine roles, responsibilities, decision-making power, opportunities, privileges, limitations and expectations.



What is Gender

Sex	Gender
Innate/inborn	Dynamic and changeable.
Universal	Differs within and between cultures.



Integrate Gender Equality

Project takes into consideration that **women, men, boys and girls** have **different needs** and that conflict is affecting them **differently**.

As humanitarian actors, our project needs to ensure that women and men, boys and girls **benefit equally** from our assistance.



Why Integrate Gender is important

In an emergency, the focus is on primary needs through the delivery, as quickly as possible, of aid (food) and livelihood support to affected communities.

However, distributing food or initiating agricultural/ livelihoods projects **will not automatically guarantee** their optimal use or an equal and positive impact on women, girls, boys and men.

Only a gender sensitive approach ensure that an adequate and efficient response is provided.



Gender in three components:

1. **Needs assessment** → helps identify gender differences such as unavailability of or unequal access to services for male and females of all ages.
2. **Activities** → Ways to address the needs identified should be integrated into activities to fill the gaps.
3. **Outcome** → should capture the change that is **expected** for the target group.



Gender Marker

- ❖ The IASC Gender Marker is a tool that codes, **on 0 - 2 scale**, whether or not a humanitarian project is designed to ensure that women, men, boys and girls of all ages will benefit equally.
- ❖ **Aim:** To measure/track inclusion of gender and GBV in projects. Or more accurately, the “Who benefits marker”



GENDER MARKER CODING

Vetting Form

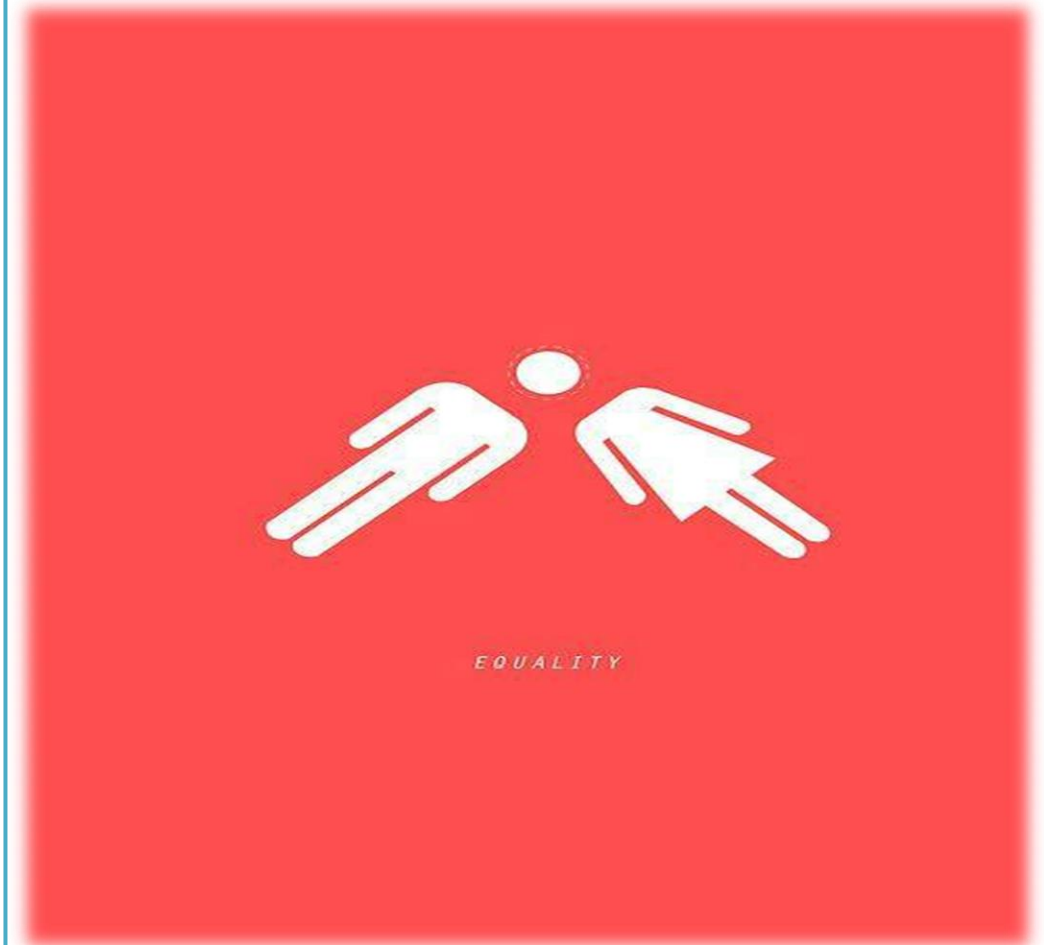
Gender Analysis in needs assessment	Gender in activities	Gender in outcomes	No of check marks	Gender code	SCORE in strategic template	SCORE in the technical template
✓	✓	✓	3	2	10	5
✓	✓		2	1	5	2
	✓	✓	2	1	5	2
✓		✓	2	1	5	2
✓			1	1	5	2
	✓		1	1	5	2
		✓	1	0	0	0
			0	0 or N/A	0	0



CODE 0: No visible potential to contribute to gender equality

CODE 1: Potential to contribute in some limited way to gender equality

CODE 2 – GENDER MAINSTREAMING
Potential to contribute significantly to gender equality



GENDER MARKER	DESCRIPTION
<p>GENDER MARKER CODE 0: <i>No visible potential to contribute to gender equality</i></p>	<p>Gender is not reflected anywhere in the project sheet</p>
<p>GENDER MARKER CODE 1: <i>Potential to contribute in some limited way to gender equality</i></p>	<p>The project includes gender equality in the needs assessment, OR in one or more activity.</p>
<p>GENDER MARKER CODE 2 <i>Potential to contribute significantly to gender equality</i></p>	<p>A gender analysis is in the project's needs assessment AND reflected in the project's activities AND outcomes</p>
<p>GENDER MARKER CODE N/A— NOT APPLICABLE</p>	<p>This project does not have <u>direct contact</u> with affected populations, and does not <u>directly affect</u> or <u>determine the selection or use</u> of resources, goods or services accessed by affected populations.</p>



The Conclusion

- ❖ “In all clusters, HF funding will prioritize projects achieving the **highest gender marker code** signifying that the project has made significant efforts to address gender concerns or the principal purpose of the project is to advance gender equality. **Only projects which scores Gender 2 will be considered for the funding. Exceptions to this requirement must be defended** with the intent to build awareness and capacity to ensure the project can achieve the required gender marker during the project period”.

